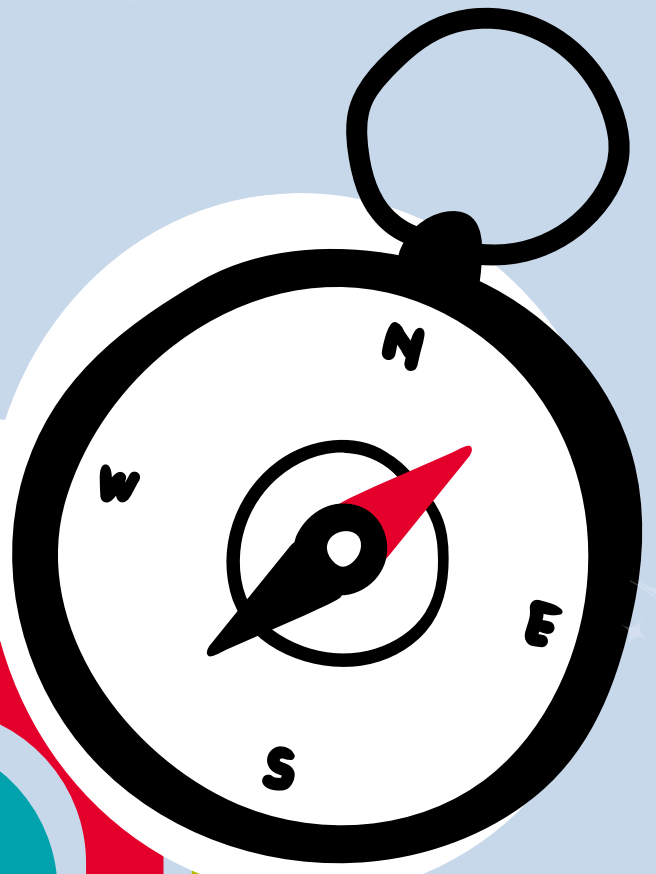


EXPLORING STUDENT

advising packet



UNIVERSITY OF
GEORGIA
Exploratory Center

**POST
APPOINTMENT
TOOLKIT**

UGA majors
CHECKLIST

**HELPFUL
ADVISING
RESOURCES**

HOW-TO
GUIDES

POST APPOINTMENT TOOLKIT

UGA majors
CHECKLIST

HOW-TO
GUIDES

Unspecified Advising Worksheet

I. Foundation Courses

ENGL 1101 English Composition I
ENGL 1102 English Composition II
& one of the following

MATH 1101 Math Modeling or
MATH 1113 Precalculus
STAT 2000: Statistics*

* satisfies AREA I + AREA III requirements

II. Sciences

Need one Physical science, one Life science, and one corresponding lab section.

If Pre-Med, please tell your advisor

Physical Science with lab

ASTR 1010+L Astronomy of Solar System
ASTR 1020+L Stellar & Galactic Astronomy
GEOG 1111+L Physical Geography
GEOG 1112+L Weather & Climate (EA)
GEOG 1113+L Landforms
GEOL 1121+L Earth Process & Environment (EA)
GEOL 1122+L Earth's History Global Change (EA)
MARS1010+L The Marine Environment (EA)

Physical Science without lab

ASTR 1010 Astronomy of Solar System
ASTR 1020 Stellar & Galactic Astronomy
ASTR 1420 Life in the Universe
GEOG 1111 Physical Geography
GEOG 1112 Weather & Climate (EA)
GEOG 1113 Landforms
GEOG 1125 Resources, Society & Environment(EA)
GEOL 1121 Earth Process & Environment (EA)
GEOL 1122 Earth's History Global Change (EA)
MARS 1011 Intro to the Marine Environment (EA)
MARS 1030 Migrations in the Sea
PHYS 1010 Physical Science

Life Science with lab

BIOL 1103+L Basic Concepts in Biology (EA)
BIOL 1104+L Organismal Biology (EA)
ECOL 1000+L Ecology (EA)
PPIO 1210+L Principles of Plant Biology (EA)

Life Science without lab

BIOL 1103 Basics Concepts in Biology (EA)
BIOL 1104 Organismal Biology (EA)
ECOL 1000 Ecology (EA)
FANR 1100 Natural Resource Conservation (EA)
FANR 1200 Natural History of Georgia (EA)
(FANR does not apply to all UGA majors)
PPIO 1210 Principles of Plant Biology (EA)

III. Quantitative Reasoning

Need one of the following courses:

ARTS 2100 Strategic Visual Thinking
CSCI 1210 Computer Modeling and
Science GEOG 2011+L Intro to GIS
MATH 1060 Mathematical Decision Making
MATH 1113 Precalculus
STAT 2000 Elementary Statistics*
PHIL 2500 Symbolic Logic

* satisfies AREA I + AREA III requirements

IV. World Languages and Culture

Need three from Foreign Language, Culture, or a combination of both.
(Most language sequences begin in the fall semester).

*Arabic – ARAB *Bengali – BENG
*Chinese - CHNS French - FREN
*Greek – GREK German GRMN
*Hebrew – HEBR *Indonesian - INDO
Italian - ITAL *Japanese - JPNS
*Korean - KREN *Latin – LATN
*Persian - PERS *Portuguese–PORT
*Quechua – QUEC *Russian - RUSS
Spanish - SPAN *Swahili - SWAH
*Vietnamese –VIET *Yoruba – YORB

Culture

AESC 2050 Effects of Global Agriculture
AFST 2100 Intro to Africa (C)
ANTH 1102 Intro Anthropology (C)
ARHI 2300/2400 Art History I+II
CMLT 2400 Asian-American Lit (C)
CMLT 2600 Black Diaspora Lit (C)
GEOG 1101 Intro to Human Geography (C)
GEOG 1130 Intro to World Geography
HIST 2221/2222 Latin American Civ I+II (C)
HIST 2301/2302 History of Western Civ I+II
HIST 2501/2502 History of Africa I+II (C)
HIST 2701/2702 World Civilizations I+II (C)
LACS 1000 Intro Latin Am &Caribbean (C)
LAND 2510 History of Built Environment I
LING 2100 Study of Language
RELI 1001 Judaism, Christianity, Islam
RELI 1002 Religions of India, China & Japan
RELI 1006 Religions of the World
ROML 2550 Latino Literature (C)

IV. Humanities & Arts (need one)

ARHI 2300/2400 Art History I+II
ARST 2100 Intro to Painting & Visuality
ARST 2210 Intro to Photo/Image Culture
ARTS 2000 Art Appreciation
ARTS 2050 Cultural Diversity in Am. Art (C)
CLAS 1000 Greek Culture
CLAS 1010 Roman Culture
CLAS 1020 Classical Mythology
CMLT 2212 World Lit Early Mod to Present
CMLT 2500 Ethnic American Lit (C)
COMM 1110 Intro to Public Speaking
COMM 1500 Intro to Interpersonal Comm
DANC 2010 Dance Appreciation
ENGL 2320 English Lit Since 1700
ENGL 2340 American Lit Since 1865
ENGL 2400 Multicultural Lit in America (C)
FILM 2120 Introduction to Cinema
LAND 1500 Design and the Environment
LLED 2110 Survey Children's Literature
MUSI 2020 Music Appreciation
MUSI 2040 History of Popular Music (C)
MUSI 2060 History of Rock & Roll (C)
PHIL 2010 Intro to Philosophy
PHIL 2020 Logic & Critical Thinking
RELI 1003 Intro to Religious Thought
RUSS 2050 20th Century Russian Culture
THEA 2000 Appreciation of Theatre

V. Social Sciences (need three)

AAEC 2580 Applied Microeconomics Principles
AFAM 2000 African American Studies (C)
AFST 2100 Intro to Africa (C)
AFST 3820 Reflections on Fighting Hunger
ANTH 1102 Intro Anthropology (C)
ETAP 2200 Education Around the World
FHCE 1110 Consumers in Our Society
GEOG 1101 Intro Human Geography (C)
GEOG 1103 Cultural Geography of US (C)
HDFS 2100 Development in the Family
^ **HIST 2111** American History to 1865
^ **HIST 2112** American History since 1865
IHDD 2001 Intro to Disability Studies
INTL 1100 Intro to Global Issues
PHIL 2030 Intro to Ethics
^ **POLS 1101** American Government
PSYC 1101 Intro to Psychology
RELI 2004 Religion Native American Cultures(C)
SOC1 1101 Intro to Sociology
SOC1 2820 Race and Ethnicity in America (C)
WMST 1110 Multicultural Women's Studies (C)
WMST 2010 Intro to Women's Studies

Graduation Requirements

University System Requirements

^ U.S. and GA. History (HIST 2111 or 2112)
^ U.S. and GA. Constitutions (POLS 1101)
Core Curriculum areas I-VI

University of Georgia Requirements

Cultural Diversity (course with a (C) behind it)
Environmental Awareness (course with a (EA))
Physical Education (PEDB prefix)

Changing your Major

You can change your major on Athena:

1. Login to [Athena](#) using your MyID
2. Select the **Student & Registration** tab
3. Select **My Programs**
4. Select **Add Major** + choose your major from the dropdown menu
5. Select **Next** + then **Confirm**

*If you are adding a major that requires an application, you will need to select the intended form of the major.

FAQS

Drop/Add + Withdrawal Deadlines can be found on the Academic Calendar:

<https://reg.uga.edu/general-information/calendars/academic-calendars/>

More information about the Exploratory Center here:

<https://advising.uga.edu/>

AP Credit Equivalencies

http://www.reg.uga.edu/creditFromTesting/advancedPlacement/uga_ap_credit_equivalencies

Took Test?	AP TEST	SCORE	COURSE (CREDIT HOURS)
	ART HISTORY	4 OR 5	ARHI 2300 (3)
	ART: STUDIO ART – DRAWING	4 OR 5	ARST 1050 (3)
	ART – STUDIO ART – 2-D DESIGN	4 OR 5	ARST 1060 (3)
	ART – STUDIO ART – 3-D DESIGN	4 OR 5	ARST 1080 (3)
	BIOLOGY	3	BIOL 1103-1103L (4)
	BIOLOGY	4	BIOL 1107-1107L (4)
	BIOLOGY	5	BIOL 1107 AND BIOL 1108 + LABS (8 TOTAL)
	CHEMISTRY	3	CHEM 1110-1110L (4)
	CHEMISTRY	4	CHEM 1211-1211L (4)
	CHEMISTRY	5	CHEM 1211 AND CHEM 1212 + LABS (8 TOTAL)
	COMPUTER SCIENCE	4 OR 5	CSCI 1301 (4)
	ECONOMICS-MACROECON	3, 4 OR 5	ECON 2105 (3)
	ECONOMICS-MICROECON	3, 4 OR 5	ECON 2106 (3)
	ENGLISH LANG. AND COMPOSITION	3 OR 4	ENGL 1101 (3)
	ENGLISH LANG. AND COMPOSITION	5	ENGL 1101 AND 1102 (6 TOTAL)
	ENGLISH LIT. AND COMPOSITION	3 OR 4	ENGL 1101 (3)
	ENGLISH LIT. AND COMPOSITION	5	ENGL 1101 AND 1102 (6 TOTAL)
	ENVIRONMENTAL SCIENCE	3, 4, OR 5	ECOL 1000-ECOL 1000L (4)
	FRENCH	3	FREN 1002 (4)
	FRENCH	4	FREN 1002 AND 2001 (7 TOTAL)
	FRENCH	5	FREN 1002, 2001 AND 2002 (10 TOTAL)
	GEOGRAPHY- HUMAN GEOGRAPHY	3 OR 4	GEOG 1101 (3)
	GEOGRAPHY- HUMAN GEOGRAPHY	5	GEOG 1101 AND 3620 (6 TOTAL)
	GERMAN	2	GRMN 1001 (Exemption – 0 CREDIT HOURS)
	GERMAN	3	GRMN 1002 (4)
	GERMAN	4	GRMN 1002 AND 2001 (7 TOTAL)
	GERMAN	5	GRMN 1002, 2001 AND 2002 (10 TOTAL)
	GOVT. AND POLITICS- US	4 OR 5	POLS 1101 (3)
	GOVT. AND POLITICS- COMPARATIVE	3,4 OR 5	INTL 1100 (3)
	HISTORY—AMERICAN	4 OR 5	HIST 2111 OR (by petition) HIST 2112 (3)
	HISTORY—EUROPEAN	4 OR 5	HIST 2302 OR (by petition) HIST 2301 (3)
	HISTORY—WORLD	4 OR 5	HIST 2702 OR (by petition) HIST 2701 (3)
	LATIN	3	LATN 1001 (4))
	LATIN	4	LATN 1001 AND LATN 1002 (8 TOTAL)
	LATIN	5	LATN 1002, 2001, 2002 (11 TOTAL)
	MATH—CALCULUS AB	3	MATH 1101,1113 EXEMPTION (0 hours)
	MATH—CALCULUS AB	4 OR 5	MATH 1101,1113 EXEMPTION (0 hrs),MATH 2250 (4)
	MATH—CALCULUS BC	3	MATH 1101,1113 EXEMPTION (0 hrs),MATH 2250 (4)
	MATH—CALCULUS BC	4	MATH 1101,1113 EXEMPTION (0 hrs),MATH 2250 (4)
	MATH—CALCULUS BC	5	MATH 2250 (4), MATH 2260 (0 HRS. UNLESS COMPLETING A SUBSE-
	PHYSICS—B	3 OR 4	PHYS 1111 AND LAB (4)
	PHYSICS—B	5	PHYS 1111 AND 1112 AND LABS (8)
	PHYSICS—C MECHANICS	3	PHYS 1111 AND LAB (4)
	PHYSICS—C MECHANICS	4 OR 5	PHYS 1211 AND LAB (4)
	PHYSICS—C ELECTRICITY AND MAGN.	4 OR 5	PHYS 1212 AND LAB (4)
	PSYCHOLOGY	3, 4 OR 5	PSYC 1101 (3)
	SPANISH—LANGUAGE AND LIT.	3	SPAN 1002 (4)
	SPANISH—LANGUAGE AND LIT.	4	SPAN 1002 AND 2001 (7 TOTAL)
	SPANISH—LANGUAGE AND LIT.	5	SPAN 1002, 2001 AND 2002 (10 TOTAL)
	STATISTICS	3, 4 OR 5	STAT 2000 (4)

REGISTRATION

resources + tools

TO VIEW YOUR DEGREEWORKS ADVISING PLAN:

- Go to DegreeWorks
- Select the *Plans* tab
- Select your advising plan labeled for the upcoming semester
- Select the *View* drop down menu in the upper right hand part of the screen
- Select *Notes* from the drop down menu for the easiest view of the plan

TO VIEW OTHER COURSE OPTIONS:

- Sign on to Athena and select *Student*
- Then *Registration*
- Then *Browse Classes*
- Then *Select a Term*
- Then use the *Advanced Search* option
- Under *Attribute* you can select the area you are hoping to fill to see what classes are offered and have seats this semester
- Cross reference those offerings here : <http://www.bulletin.uga.edu/GenEdCoreBulletin>

TO VIEW A FULL LIST OF CORE AREA COURSE OPTIONS:

<http://www.bulletin.uga.edu/GenEdCoreBulletin>

TO VIEW UGA GRADUATION REQUIREMENTS:

http://www.bulletin.uga.edu/Bulletin_Files/uga_req.html

TO VIEW UGA REGISTRATION DATES:

<https://reg.uga.edu/general-information/calendars/registration-dates/>

TO VIEW COMMON REGISTRATION ERRORS:

<https://reg.uga.edu/enrollment-and-registration/registration/basics/>

TO VIEW REGISTRATION & ADDITIONAL ATHENA TUTORIALS:

<https://reg.uga.edu/general-information/athena-upgrades/tutorials/>

explore advising
important links

DROP-IN
HOURS

MAJOR
RESOURCES

EVENT
CALENDAR

CAREER CENTER

ADVISING OFFICES

COLLEGE OF
AGRICULTURAL &
ENVIRONMENTAL
SCIENCES

COLLEGE OF
EDUCATION

COLLEGE OF
ENGINEERING

COLLEGE OF FAMILY &
CONSUMER SCIENCES
DROP-IN HOURS

COLLEGE OF
PHARMACY

COLLEGE OF
PUBLIC HEALTH

FRANKLIN COLLEGE OF
ARTS AND SCIENCES
REQUIREMENTS

FRANKLIN COLLEGE
DROP-IN HOURS

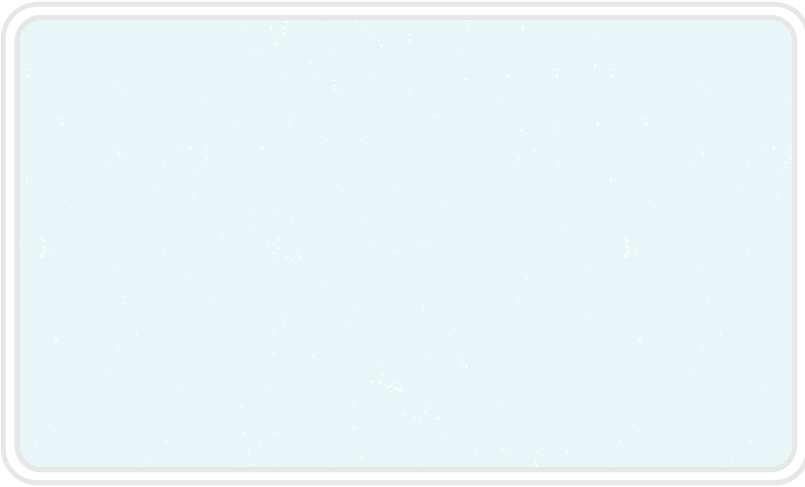
ODUM SCHOOL
OF ECOLOGY

PRE-PROFESSIONAL
ADVISING

SCHOOL OF PUBLIC &
INTERNATIONAL AFFAIRS

SCHOOL OF
SOCIAL WORK

WARNELL SCHOOL
OF FORESTRY &
NATURAL RESOURCES



UGA majors
CHECKLIST



HOW-TO
GUIDES



UGA MAJORS CHECKLIST BY COLLEGE & SCHOOL

Instructions:

1. Place a question mark (?) next to majors that you do not know enough about
2. Place a plus (+) next to majors of interest
3. Strikethrough (~~striketrough~~) majors in which you have no interest

COLLEGE OF AGRICULTURAL AND ENVIRONMENTAL SCIENCES

Agribusiness	
Agricultural and Applied Economics	
Agricultural Communication	
Agricultural Education	
AgriScience and Environmental Systems	
Animal Health	
Animal Science	
Applied Biotechnology	
Avian Biology	
Biological Science	
Dairy Science	
Entomology	
Environmental Economics and Management	
Environmental Resource Science	
Food Science	
Horticulture	
Hospitality and Food Industry Management	
Poultry Science	
Regenerative Bioscience	
Turfgrass Management	
Water and Soil Resources	

COLLEGE OF ENGINEERING

Agricultural Engineering	
Biochemical Engineering	
Biological Engineering	
Civil Engineering	
Computer Systems Engineering	
Electrical and Electronics Engineering	
Environmental Engineering	
Mechanical Engineering	

COLLEGE OF ENVIRONMENT AND DESIGN

Landscape Architecture	
------------------------	--

COLLEGE OF FAMILY AND CONSUMER SCIENCES

Consumer Economics	
Culinary Science and Nutrition	
Dietetics	
Family & Consumer Sciences Education	
Fashion Merchandising	
Financial Planning	
Furnishings and Interiors	
Housing Management and Policy	
Human Development and Family Science	
Nutritional Sciences	
Social Entrepreneurship for Consumer Well-Being	

COLLEGE OF PHARMACY

Pharmaceutical Sciences	
-------------------------	--

COLLEGE OF PUBLIC HEALTH

Environmental Health Science	
Health Promotion	

COLLEGE OF VETERINARY MEDICINE

Biomedical Physiology	
-----------------------	--

FRANKLIN COLLEGE OF ARTS AND SCIENCES

African American Studies	
Anthropology	
Arabic	
Art (Ceramics, Drawing/Painting, Fabric Design, Graphic Design, Interior Design, Jewelry and Metalwork, Photography and Expanded Media, Printmaking, Scientific Illustration, Sculpture)	
Art/Art Education	
Art/Art History	
Art: Interdisciplinary Art and Design	
Asian Languages & Literature	
Astrophysics	
Atmospheric Sciences	
Biochemistry and Molecular Biology	
Biology	
Cellular Biology	
Chemistry	
Classics	
Cognitive Science	
Communication Studies	
Comparative Literature and Intercultural Studies	
Computer Science	
Criminal Justice	
Dance	
Data Science	

English	
Film Studies	
French	
Genetics	
Geography	
Geology	
German	
History	
Interdisciplinary Studies	
Latin American and Caribbean Studies	
Linguistics	
Mathematics	
Microbiology	
Music	
Music Composition	
Music Education	
Music Performance	
Music Theory	
Music Therapy	
Ocean Science	
Philosophy	
Physics	
Plant Biology	
Psychology	
Religion	
Romance Languages	
Russian	
Sociology	
Spanish	
Statistics	
Theatre	
Women's Studies	

GRADY COLLEGE OF JOURNALISM AND MASS COMMUNICATION

Advertising	
Entertainment and Media Studies	
Journalism	
Public Relations	

MARY FRANCES EARLY COLLEGE OF EDUCATION

Communication Sciences and Disorders	
Elementary Education	
English Education	
Exercise and Sport Science	
Health and Physical Education	
Mathematics Education	
Middle Grades Education	
Science Education	
Social Studies Education	
Special Education	

Sport Management	
TESOL and World Language Education	

ODUM SCHOOL OF ECOLOGY

Ecology	
---------	--

SCHOOL OF PUBLIC AND INTERNATIONAL AFFAIRS

Criminal Justice (also in Franklin)	
International Affairs	
Political Science	

SCHOOL OF SOCIAL WORK

Social Work	
-------------	--

TERRY COLLEGE OF BUSINESS

Accounting	
Economics	
Finance	
Management	
Management Information Systems	
Marketing	
Real Estate	
Risk Management and Insurance	
International Business (Co-Major)	

WARNELL SCHOOL OF FORESTRY AND NATURAL RESOURCES

Fisheries and Wildlife	
Forestry	
Natural Resource Management and Sustainability	
Parks, Recreation, & Tourism Management	

Next Steps:

1. Use the UGA Bulletin to review major requirements - bulletin.uga.edu
2. Check out "What Can I Do with a Major In...?" for list of entry-level career opportunities and graduate school options (sourced from the UGA Career Outcomes) - career.uga.edu/wcidwami
3. Try keyword searches on the UGA Admissions All Programs page to sort your major/minor/certificate options - majors.admissions.uga.edu/explore

Last updated: September 2022



Career Center
UNIVERSITY OF GEORGIA



UGA MINORS CHECKLIST

Instructions:

1. Place a question mark (?) next to minors that you do not know enough about
2. Place a plus (+) next to minors of interest
3. Strikethrough (~~strikethrough~~) minors of no interest

Aerospace Studies	
African American Studies	
African Languages and Literature	
African Studies	
Agribusiness and Management	
Agricultural and Applied Economics	
American Sign Language	
Animal Science	
Anthropology	
Applied Biotechnology	
Arabic	
Art/Art History	
Asian Language and Literatures	
Astrophysics	
Avian Biology	
Biochemistry and Molecular Biology	
Biological and Medical Anthropology	
Biology	
Biomedical Physiology	
Cellular Biology	
Chemistry	
Chinese Language and Literature	
Classical Culture	
Classics and Comparative Cultures	
Cognitive Science	
Communication Studies	
Comparative Literature and Intercultural Studies	

Computer Science	
Consumer Economics	
Criminal Justice Studies	
Crop Science	
Culinary Science and Nutrition	
Dairy Science	
Dance	
Design and Media	
Disaster Management	
Ecology	
Elementary Agricultural Education	
English	
Entomology	
Environmental Design	
Environmental Economics and Management	
Environmental Health Science	
Environmental Law	
Environmental Soil Science	
Exercise and Sport Science	
Fashion Merchandising	
Film Studies	
Food and Fiber Marketing	
Food Science	
French	
French Studies	
General Business	
Genetics	
Geography	
Geology	
German	
Gerontology	
Global Health	
Greek	
Health Policy and Management	
Hebrew Language and Literature	
Historic Preservation	
History	
History of Science, Medicine, and Engineering	
Horticulture	
Housing Management and Policy	
Human Development and Family Science	
Human Services	
International Affairs	
International Human Rights and Security	
Italian	

Japanese Language and Literature	
Jazz Music	
Korean Language and Literature	
Landscape Studies	
Latin	
Latin American and Caribbean Studies	
Latinx Studies	
Law, Ethics, and Philosophy	
Law, Jurisprudence, and the State	
Linguistics	
Mathematics	
Microbiology	
Military Science	
Music	
Nutritional Sciences	
Personal Health and Well-Being	
Pharmaceutical Sciences	
Philosophy	
Physics	
Plant Biology	
Plant Pathology	
Political Science	
Portuguese	
Poultry Science	
Public Health	
Public Policy and Management	
Quechua	
Religion	
Resource Economics	
Russian	
Social Work	
Sociology	
Spanish	
Sport Management	
Statistics	
Studio Art	
Swahili Language, Literature, and Culture	
Teaching English to Speakers of Other Languages	
Theatre	
Transnational European Studies	
Turfgrass Management	
Vietnamese Language and Literature	
Women's Studies	

UGA UNDERGRADUATE CERTIFICATE CHECKLIST

Actuarial Science	
African Studies	
Agribusiness Law	
Applied Data Science	
Archaeological Sciences	
Asian Studies	
Atmospheric Sciences	
British and Irish Studies	
Coastal and Oceanographic Engineering	
Computing	
Cybersecurity and Privacy	
Data Analytics in Public Policy	
Digital Humanities	
Disability Studies	
Disaster Management	
Entrepreneurship	
Environmental Education	
Environmental Ethics	
Film and Media Scoring	
Financial Technology	
Geographic Information Science	
Global Health	
Global Studies	
Historic Preservation	
Informatics	
Interdisciplinary Writing	

International Agriculture	
Leadership and Service	
Learning, Design, and Technology	
Legal Studies	
LGBTQ Studies	
Local Food Systems	
Medieval Studies	
Museum Studies	
Music Business	
Musical Theatre Performance	
Native American Studies	
New Media	
News Literacy	
Nonprofit Management and Leadership	
One Health	
Personal and Organizational Leadership	
Pharmacy Entrepreneurship	
Plant Health Management	
Public Affairs Professional Certificate	
Public Health Data Fluency	
Sports Media	
Strategic Health and Risk Communication	
Sustainability	
Urban and Metropolitan Studies	
Water Resources	

Next Steps:

1. Explore minor/certificate requirements and contact information for more questions about these programs in the UGA Bulletin.
 - a. Minors - <https://bulletin.uga.edu/MinorDisplay>
 - b. Certificates - <https://bulletin.uga.edu/CertDisplay>
2. Discuss the addition of a minor or certificate to your major with your academic advisor for more information about your course sequence and pathway to completion of the program.
3. Compare the coursework offered in the minor or certificate with the requirements of related majors in the school or college that offers the program. If they align with coursework offered in a major, consider your career options that overlap between the programs with our “What Can I Do with a Major In...” guides.
 - a. <https://career.uga.edu/wcidwami>

Last updated: September 2022



Career Center
UNIVERSITY OF GEORGIA



UGA MINORS VS. UGA UNDERGRADUATE CERTIFICATES

SIMILARITIES

- Broadens your education by studying an area of interest
- Provides access to new faculty, which may support new opportunities for experiential learning or research
- Can be listed in the Education section of a resume and the courses required may feature in a Relevant Coursework section of a resume
- Can be described in a cover letter or personal statement to demonstrate knowledge, skills, or abilities resulting from the course options
- A completed minor or certificate will be recorded on your transcript but not on your diploma
- Consult with the contact of the minor or certificate listed in the UGA Bulletin for information about requirements or how to complete the courses
 - bulletin.uga.edu/MinorDisplay
 - bulletin.uga.edu/CertDisplay
- If the minor or certificate coursework overlaps with a major, consider your additional career options by visiting the Career Center's "What Can I Do with a Major in..." pages
 - career.uga.edu/wcidwami

MINORS

- 15 to 18 semester hours of course work
- Core Areas I through V may not be counted as course work in the minor
- Typically, a minor aligns directly with a major but some minors have slightly different names from their corresponding majors or borrow from multiple disciplines for their course requirements
- Typically, minors do not require an application and can be added or removed as desired in Athena. A few minors, such as Music, require an audition or permission of department to add

UNDERGRADUATE CERTIFICATES

- Semester hours of course work requirements are typically higher, typically between 18–21 hours with some as high as 30 or as low as 12
- Typically, a certificate does not align directly with one major but consists of classes sourced from several academic disciplines
- Some certificates require an application to start or have additional stipulations beyond the course requirements

*Special note on certificate vs. certification:

- Certificate and certification are sometimes loosely interchanged when casually discussing preparation for careers, but completing an academic certificate does not always lead to a certification to perform a specific skill/competency or meet a qualification for a specific career
- "Certificates are unique to the institution where they are earned... Simply put, a certificate is evidence of education, while certification is evidence of passing an exam or meeting industry standards. Because certifications are often issued by national organizations, they are standardized"
bestcolleges.com/blog/certificates-certifications-licenses



UGA majors
CHECKLIST

**HELPFUL
ADVISING
RESOURCES**

HOW-TO
GUIDES

Where do I go?

GUIDE TO UGA STUDENT RESOURCES

DEGREEWORKS

degreeworks.uga.edu

- View your advising plan
- Check your GPA (UGA + Overall)
- View number of credit hours earned
- Look over degree course requirements
- Verify AP score credit is received
- View placement test credit/exemptions
- Verify Dual Enrollment credit is received
- Verify Transfer credit is received
- Verify Transient credit is received
- Use the "What If" function to explore other major + degree options

SAGE

sage.uga.edu

- Make an appointment with your advisor
- View your advisor's drop-in hours
- Find your advisor's email
- Find your advisor's office location
- View your Success Network
- Sign up for an Explore Consultation

OFFICE OF STUDENT FINANCIAL AID

ofsa.uga.edu

- Get HOPE/Zell Scholarship information
- Ask questions about FAFSA
- Ask questions about grants, loans, or your financial aid award
- Find out how withdrawing from a course can impact your financial aid package

ATHENA

athena.uga.edu

- Change your major
- Add a minor, double major, or certificate
- View holds and see how to clear them
- Register for classes
- Look up classes
- Withdraw from classes
- Sign up for a waitlist for a course
- View test scores
- View unofficial transcripts
- Order official transcripts (MyUGA Portal)
- Request Enrollment Verification letters

UGA BULLETIN

bulletin.uga.edu

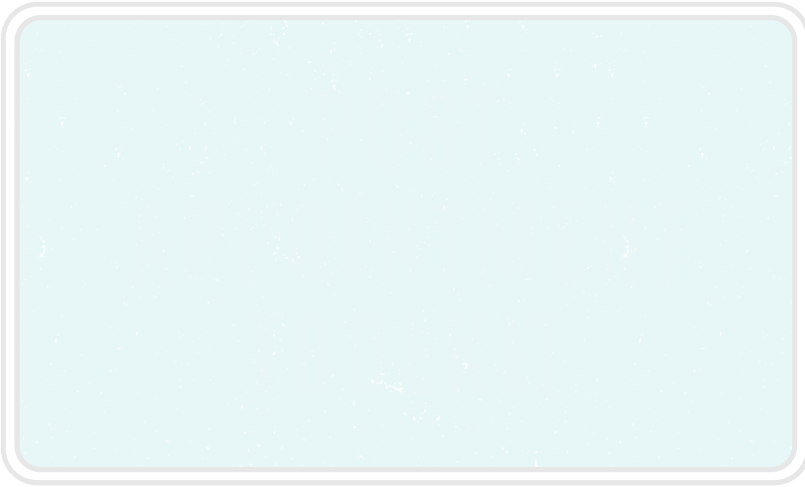
- View all majors, minors, + certificates
- View full program of study for major(s)
- Compare majors side-by-side
- Read course descriptions
- View co + pre-requisite requirements
- Locate sample syllabi for courses
- Access the schedule of classes
- View the Final Exam schedule
- Read info about Final Exam conflicts
- Learn more about important University policies + procedures

OFFICE OF THE REGISTRAR

reg.uga.edu

- View UGA grade scale
- Learn more about registration + holds
- View DegreeWorks tutorials
- Review UGA policies + procedures
- View UGA Calendar + announcements
- Read about FERPA policy + waiver
- Locate UGA Student Forms (e.g. late add, name change, pass/fail, etc.)





UGA majors
CHECKLIST



HOW-TO
GUIDES

HOW TO *research majors at UGA*

Majors Checklist

<http://career.uga.edu/uploads/documents/UGAMajorsChecklist.pdf>

This is a list of all majors, minors, and certificate programs offered at UGA.

The Bulletin

<http://bulletin.uga.edu/index.aspx>

You can look up each major on the Majors tab. This will take you to a description of the major and career opportunities for that major. Then also click on "Degree Requirements" on the right in the gray box that says Find Out More. This will take you to a list of all required courses for that major.

DegreeWorks

<https://degreeworks.uga.edu>

This is your degree audit. It will show you all of the requirements you need to fulfill to graduate and which classes are satisfying which requirement. You can use the "What If" function (look in the upper left hand corner) to see how those requirements will change if you declare a certain major.

You can find tutorials for different functions of DegreeWorks here: <https://reg.uga.edu/general-information/degreeworks/tutorials/>.

Departmental Websites

(search <https://www.uga.edu/> for links)

There is often a lot of good information on departmental websites about their majors. Check it out and see what there is to learn there.

Student Clubs and Organizations

<https://uga.campuslabs.com/engage/>

Some majors have related student clubs. These clubs can be a fun, low pressure way to explore different majors and to meet other students and professors in those majors.

What Can I Do With a Major In

<http://career.uga.edu/wcidwami>

This is part of the Career Center's website. Every year about six months after graduation, the Career Center sends a survey out to all recent graduates to find out what they are doing after college. They use that information on the What Can I Do With a Major In webpage.

HOW TO *research career options*

Career Outcomes Survey

<http://career.uga.edu/outcomes>

This page has similar data as What Can I Do With a Major In, but it includes average salary.

The Occupational Outlook Handbook

<https://www.bls.gov/ooh/>

This site is published by the Bureau of Labor Statistics. You can look up careers and find out the job outlook, the work environment, the required education, etc.

Candid Career

<https://www.candidcareer.com/>

This site has videos of informational interviews with people in different professions. If you use the link on the [Career Center's webpage](#) on the Resources tab, then you will not have to sign in to access this site.

Explore Health Careers

<https://explorehealthcareers.org/>

This website is similar to the Occupational Outlook Handbook, but it is specifically for careers in health care.

Assessments

http://career.uga.edu/majors_careers/assessments

If you aren't sure what kind of career you're interested in, the Career Center has assessments on their website that will help you identify your interests. After taking an assessment, please call the Career Center at 706-542-3375 to make an appointment with Maggie O'Brien or MarKeicha Dickens, the career consultants for undecided students. They can discuss your results with you and help you match that up with potential careers.

HOW TO *change your major on Athena*

IF YOU WOULD LIKE TO CHANGE YOUR MAJOR:

- Log into [Athena](#)
- Select *Student*
- Select *Student & Registration*
- Select *My Programs*
- To add a major:
 - * Select *Add Major*
 - * Select your new major from the dropdown menu
 - * Select *Next, then Confirm*
 - * The new major will now appear under My Majors
- To remove a major:
 - * Select *Remove Major*
 - * Select the major you wish to remove from the dropdown menu
 - * Select *Next, then Confirm*
 - * The major will no longer appear under My Majors

**Always add the major you want first before deleting your existing major*

NOTES:

- You can follow these same instructions to add or remove a minor
- Some programs that you may add might require an approval and will not appear automatically (art, music, etc.)
- If you would like to pursue a Terry or Grady major, you will need to select the **Intended** version of the major before you apply.